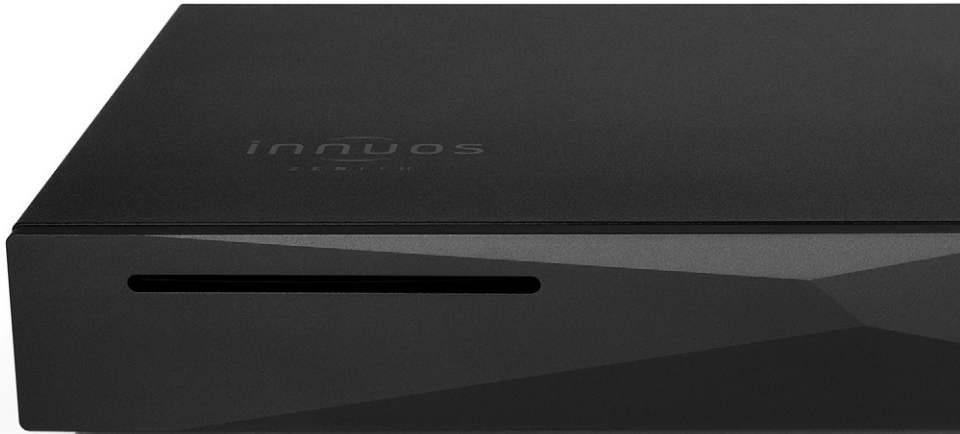


innuos



# ZEN / ZENITH Mk3 Quick Start Guide

# Thank you for buying our Music Server.

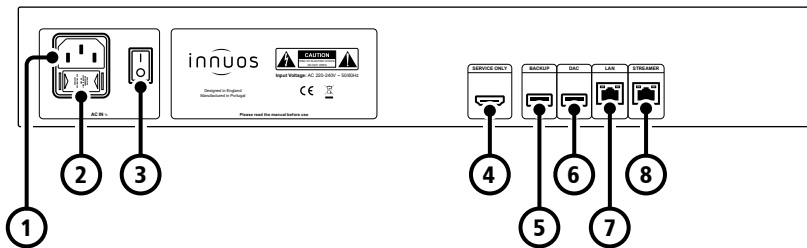
This quick start guide will show you how to get started with your new Music Server.

For more detailed information please read our innuOS manual [innuos.com/en/go/innuos-manual](http://innuos.com/en/go/innuos-manual)

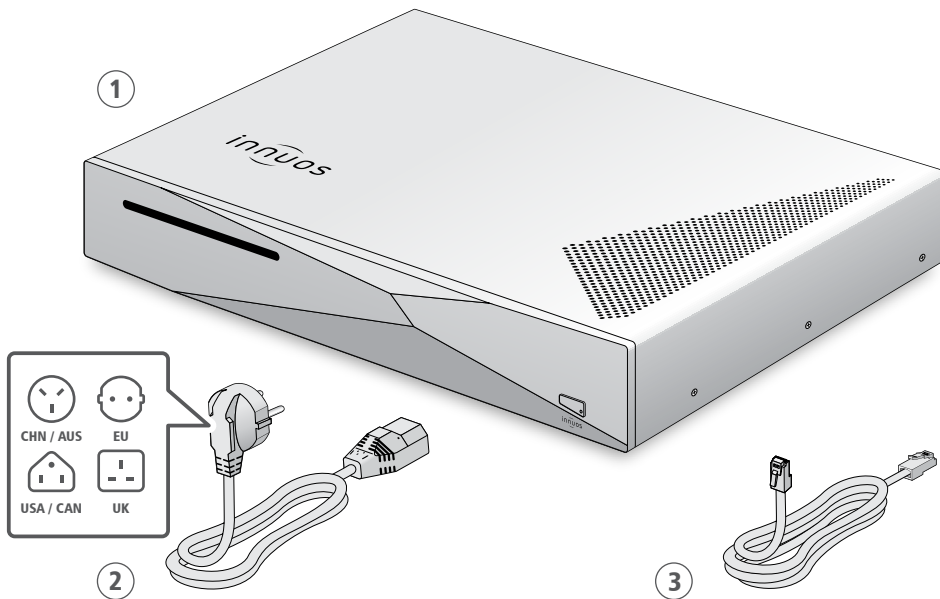
Should you have problems please contact [support@innuos.com](mailto:support@innuos.com) and we'll be happy to assist you.



<b>1</b>	ZEN/ZENith Mk3 Rear Panel Diagram .....	2
<b>2</b>	Box Contents .....	3
<b>3</b>	Connect your System to mains power .....	4
<b>4</b>	Connect your System to your home network .....	5
<b>5</b>	Connect Network Audio Device to Streamer Port .....	6
<b>6</b>	Turn on your System .....	7
<b>7</b>	Update innuOS software to the latest version .....	8
<b>8</b>	Adding music to your System .....	9
<b>9</b>	Using your System as a Player .....	11
<b>10</b>	Connecting to a UPnP / DLNA system .....	12
<b>11</b>	Using Player Apps .....	13
<b>12</b>	Connecting to a Sonos system .....	16
<b>13</b>	Using your System with Roon .....	18
<b>14</b>	Turn off your System .....	20



- 1 Mains Power Connector
- 2 Fuse Box
- 3 On/Off Switch
- 4 HDMI Output (Service Only)
- 5 USB for Backup Drive (USB 3)
- 6 USB DAC output (USB 2)
- 7 Ethernet Input from Router
- 8 Ethernet Streamer Port

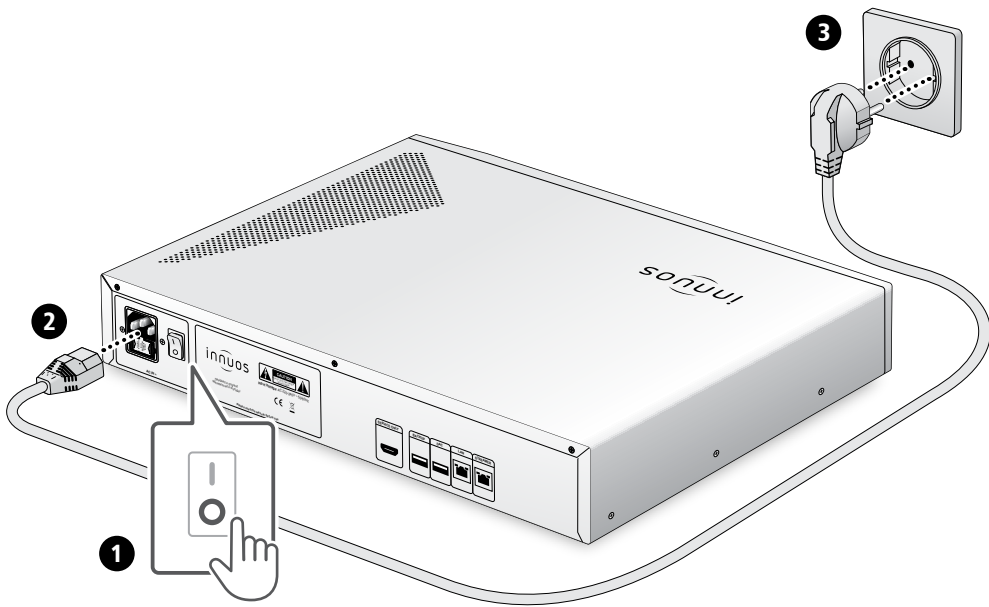


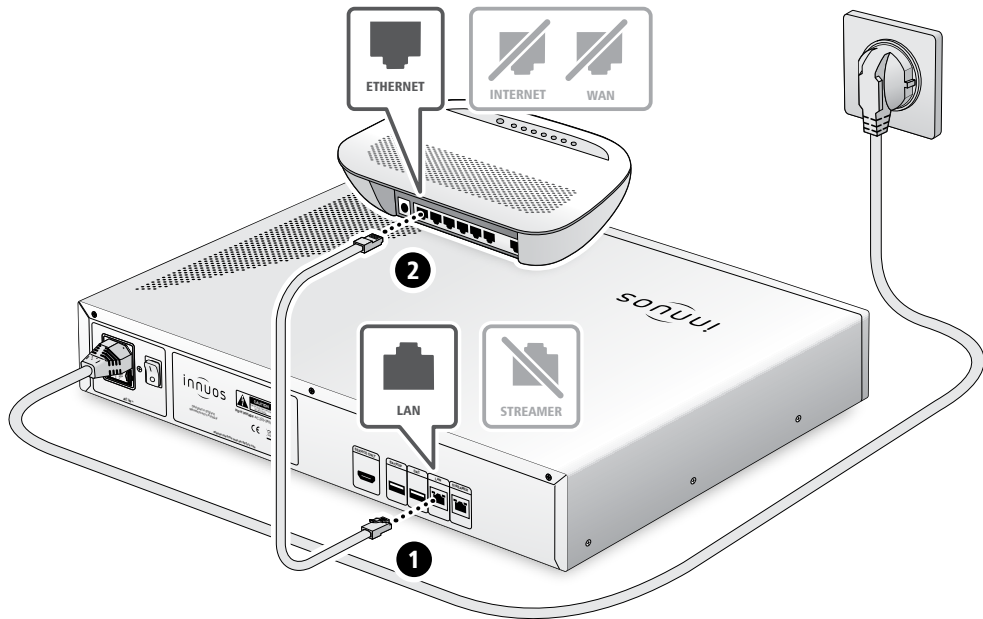
① Innuos ZEN / ZENith Mk3 Music Server

② Mains Cable

③ 2m Ethernet Cable

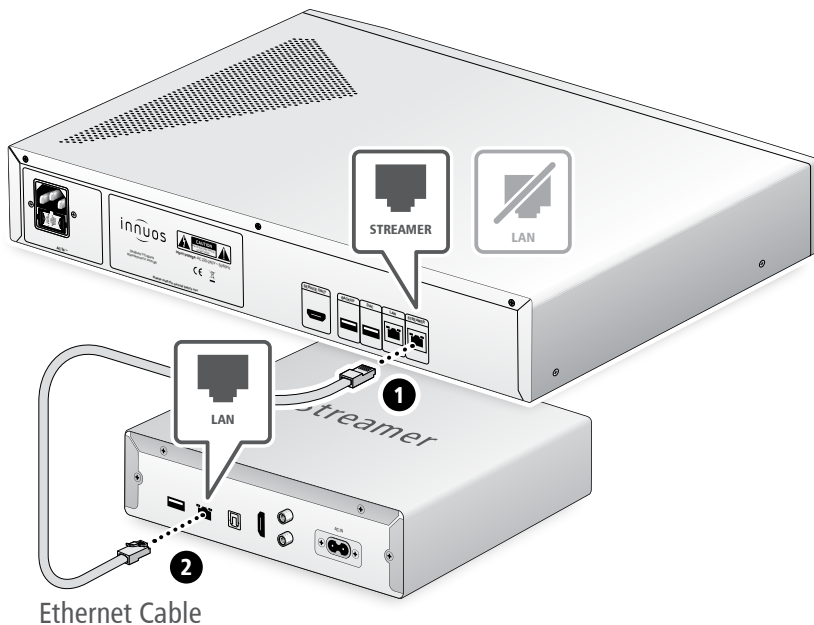
# 3 Connect your System to mains power



**OPTION A** Wired to the Internet Router

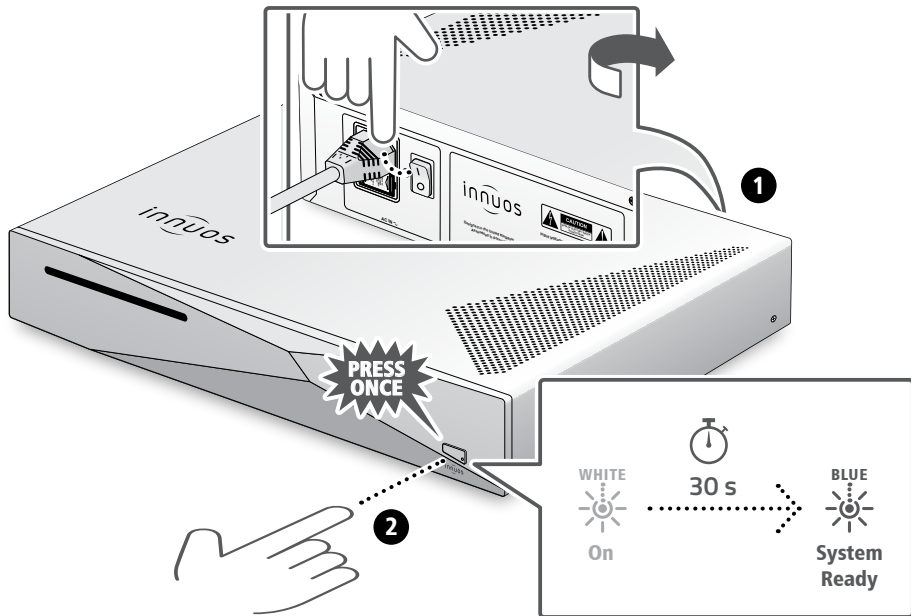
**NOTE**

Optional - Not required for server operation



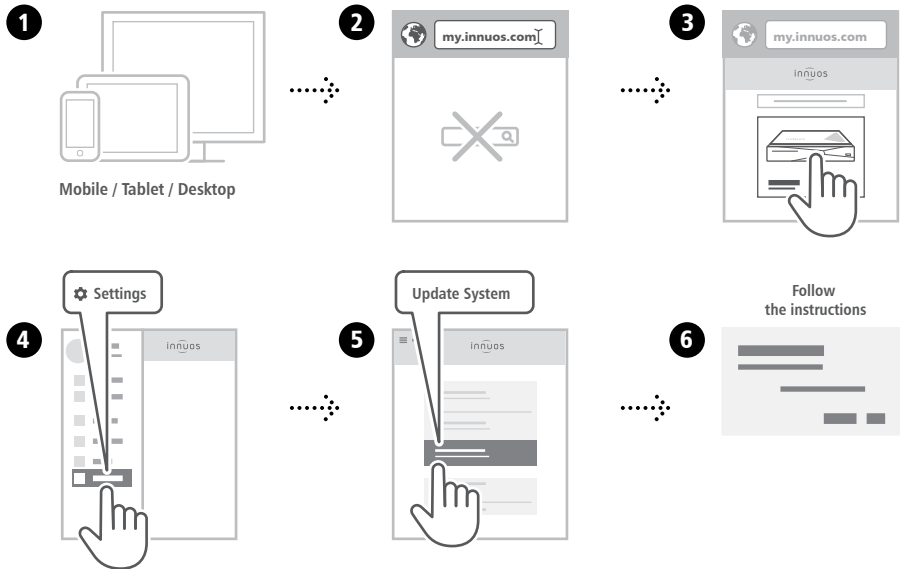
The Streamer Port provides a wired network connection for streamers, wireless speakers and other network audio products.

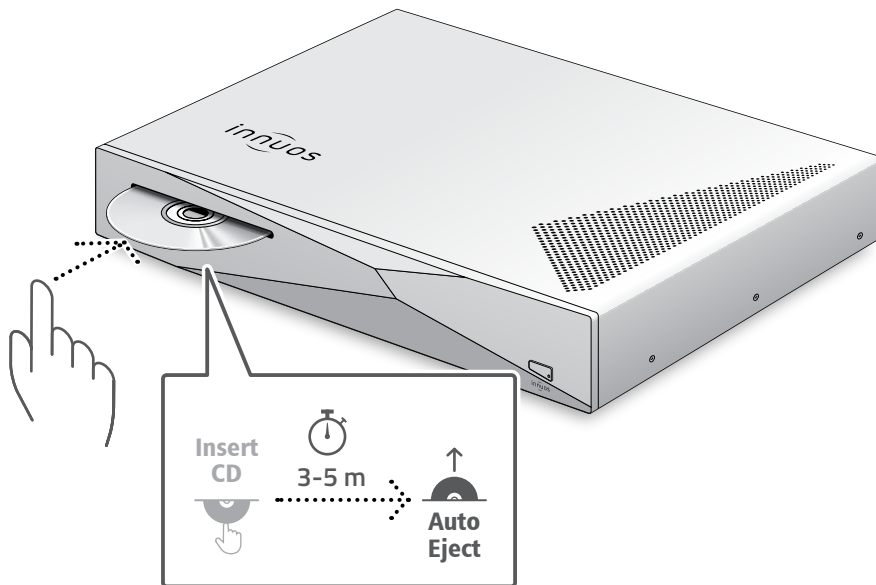




Please press and release. Do not hold the front power button down.





**OPTION A** Rip CDs

Do not push the CD while it is being drawn in as this may cause it to jam or damage the optical drive.



## OPTION B Import Digital Music

1



Mobile / Tablet / Desktop



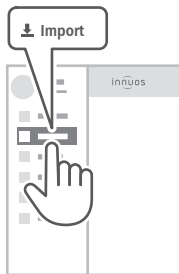
2



3



4

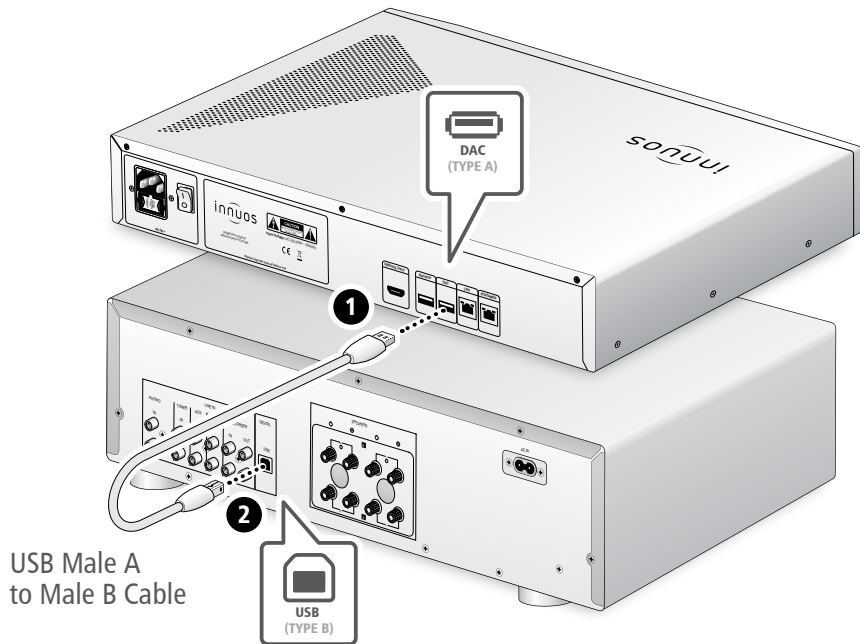


5

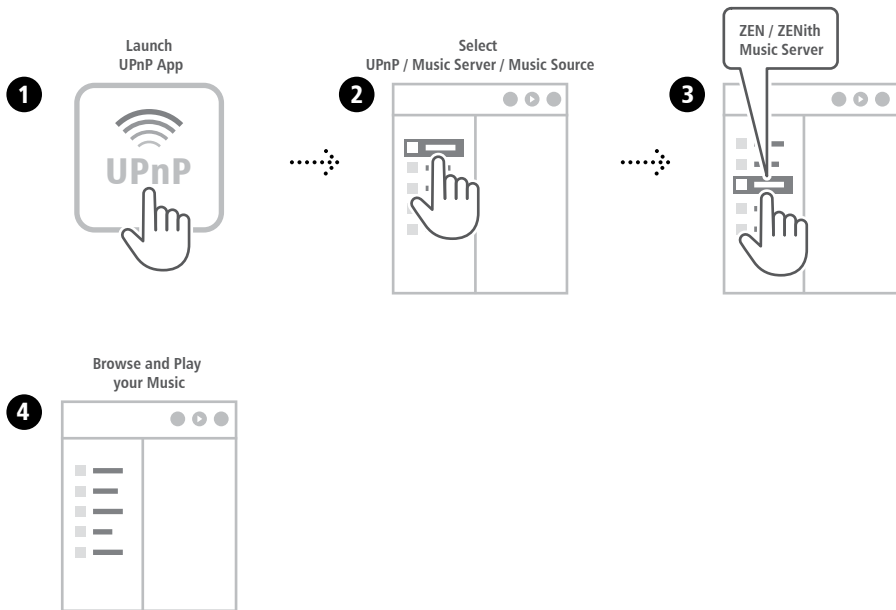


6



**SETUP A** Connect to a DAC/Amplifier via USB

**Note:** USB Cable not included. Requires DAC compatible with USB Audio Class 2.



The UPnP app is provided by the manufacturer of your streamer, ie. Bose, B&O, Naim, Bluesound, etc.

## Recommended Remote Control App



iPhone / iPad / iPod Touch



Android / Kindle Fire



Windows 8 / 10



These control apps are to be used when the server is connected as a player by USB.

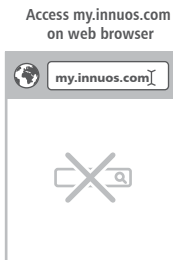
# 1 Setup Streaming Services (Optional)

1



Mobile / Tablet / Desktop

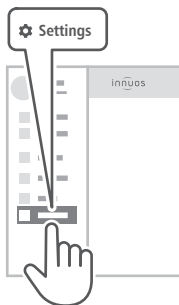
2



3



4



5



6

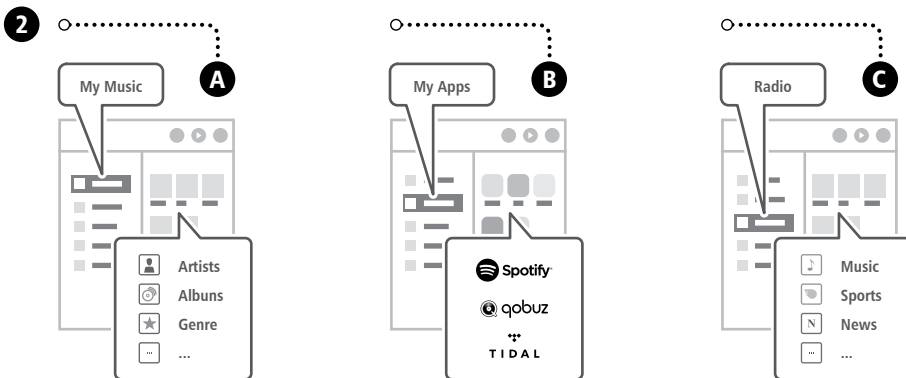
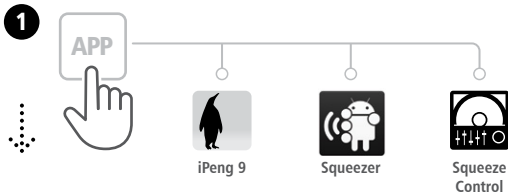


Streaming Apps require a premium account subscription.



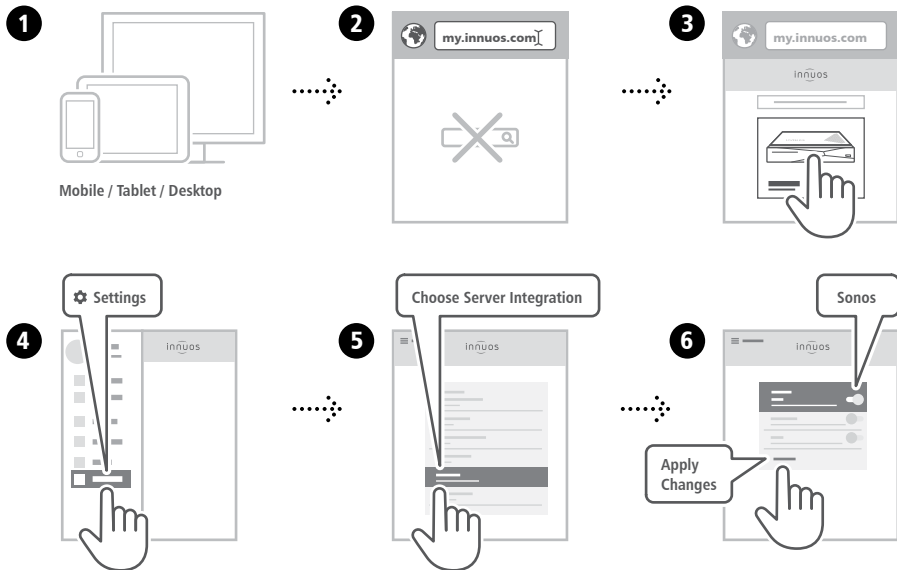
## 2 Play your music

Launch your App (iPeng 9 / Squeezer / Squeeze Control)



If the server is not found, please contact us at [support@innuos.com](mailto:support@innuos.com)



**1** Setup

## 2 Play

1

Launch Sonos  
App (Android / iOS)

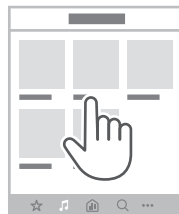


2



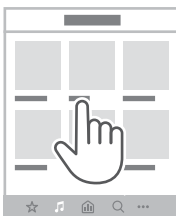
3

Browse by:  
Artists / Albums / Genres / ...



4

Choose  
the desired album

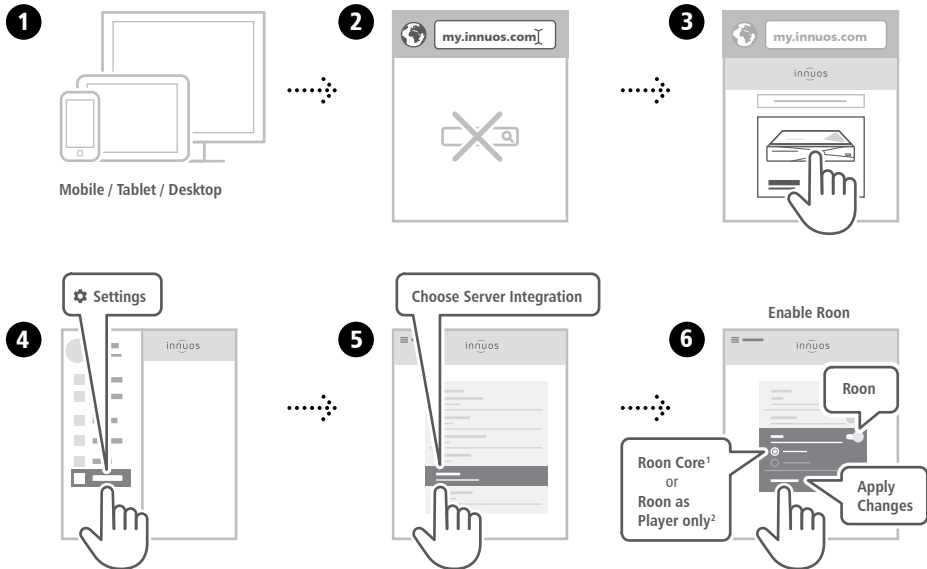


5

Play



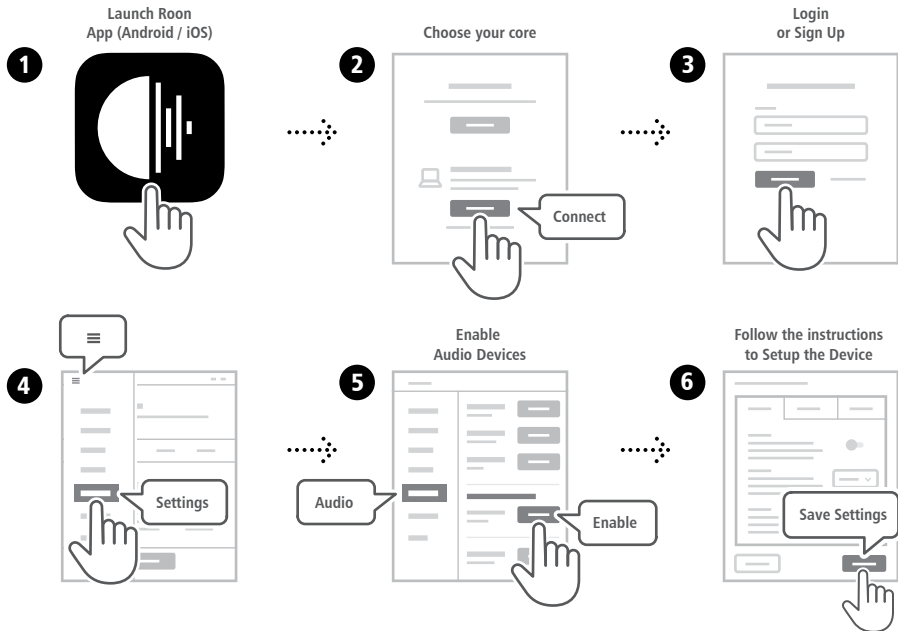
## 1 Enable Roon on innuOS

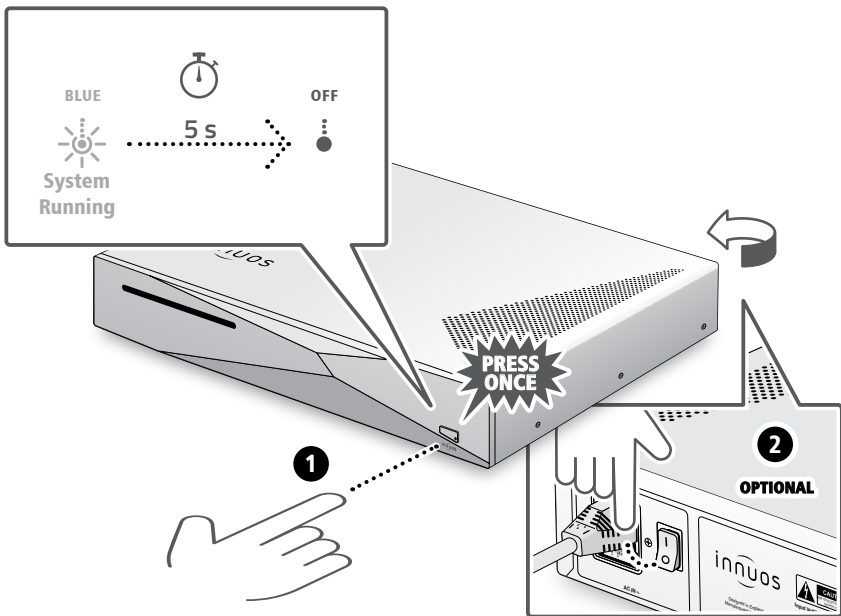


<sup>1</sup>**Roon Core:** Select if you want to use this server as Roon Server and Player.

<sup>2</sup>**Roon as Player only:** Select if you are running Roon Core on another system.

## 2 Setup Roon Core

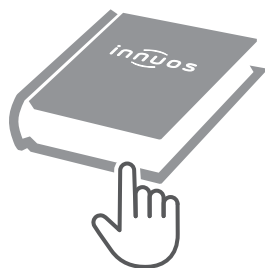




Please press and release. Do not hold the front power button down.

Notes: \_\_\_\_\_  
\_\_\_\_\_  
\_\_\_\_\_  
\_\_\_\_\_  
\_\_\_\_\_  
\_\_\_\_\_  
\_\_\_\_\_  
\_\_\_\_\_  
\_\_\_\_\_  
\_\_\_\_\_  
\_\_\_\_\_  
\_\_\_\_\_  
\_\_\_\_\_  
\_\_\_\_\_  
\_\_\_\_\_  
\_\_\_\_\_





For more information and for the latest version of this quick start guide please visit:

**[innuos.com/support](https://innuos.com/support)**